

APP instructions

Device Management:

- Device list: AAA, AAA
- Action: Add device
- Input password: [password field]
- Login button

Device Setting:

- Setting | About
- Name: AAA → Amend device name
- Label: AAAAAA → Remarks: location

Working Period Setting:

- Delete working period: ✕
- Add working period: +
- Example: 07:00-21:00 Grade: 09
- Time switch: [toggle]

(PS: There are 5 working periods available to be set.)

Amend password

Change Password:

- Device control: Set | About
- PCB Version: AAAA
- Equipment version: AAAA
- APP version: AAAA
- Change password button
- New password field
- Confirm password field
- Change password button

Working period setting:

- Start working time: 06:00
- Stop working time: 01:01
- Slide up and down to adjust
- Repeat: Mon, Tue, Wed, Thur, Fri, Sat, Sun
- Select the day
- Concentration grade: 6
- Custom Stall: [checkbox]
- Work Time(S): 14, 15, 16
- Stop Time(S): 24, 25, 26
- Select grade (1-20grade)

If you forget the password, please press the reset button to restore the factory settings. The factory settings password is 8888. Press ENT and hold for about 5 seconds until a sound "beep" comes out, the machine will be reset.

Time Setting

local time Diffusing display

Power indicator: Electricity connected-light on

Bluetooth indicator: Connected-Light on, Disconnected-Light off

Buttons: SET, ^, v, ENT

Power on/off

Connect power and turn on the switch with a sound "beep" coming out, and then screen displays initial time and current grade. The screen will be off after turn off the switch or disconnect the power.

Auto-lock and unlock

Screen will be locked(off) automatically if there is no any further manual manipulation within 60s; Touch SET (about 5s) until a sound "beep" comes out, the screen will be unlock.

Local time setting

Press SET button for about 5 seconds until you hear a sound "beep", the date value starts flashing. Press ▲ or ▼ to adjust the date. Once confirm, press ENT to move to time setting and press ▲ or ▼ to adjust the value. Once finished, touch SET to confirm. (Shown as picture 1)

Buttons: SET, ^, v, ENT

(1)

Concentration grade setting

There are 20 grades to choose. Press ▲ to increase and ▼ to decrease. (Shown as picture 2). If display shows -CU- as grade, it is customized setting which only can be operated via our APP. PS: Operation via manual or APP will be synchronized.

Buttons: SET, ^, v, ENT

(2)

Work time period setting

There are 5 working periods available to be set every day (Figure 3). Touch SET button to set working period (ON1), touch ▲ or ▼ to choose working period (1-5); touch ENT button for the working period switch, touch ▲ or ▼ to choose ON or OFF, touch ENT button again to move to the operation time, touch ▲ or ▼ to adjust number. Touch ENT again for grade. Next touch ENT to choose the day (MON), touch ▲ button to turn on the working period (ON1) (Figure4) or touch ▼ button to turn off the working period (OFF1) (Figure5). Touch ENT to move to the next day and repeat the steps for TUES to SUN. Once finish, touch SET to confirm and exit or press ENT to period (ON 1) for other working period setting. Repeat the same setting steps of ON1 for ON2, ON3, ON4 and ON5. PS: Machine doesn't work when the start working period is as same as stop working time

Working time period	00:00	00:00	00:00	00:00	00:00
Mon	ON/OFF	ON/OFF	ON/OFF	ON/OFF	ON/OFF
Tues	ON/OFF	ON/OFF	ON/OFF	ON/OFF	ON/OFF
Wed	ON/OFF	ON/OFF	ON/OFF	ON/OFF	ON/OFF
Thur	ON/OFF	ON/OFF	ON/OFF	ON/OFF	ON/OFF
Fri	ON/OFF	ON/OFF	ON/OFF	ON/OFF	ON/OFF
Sat	ON/OFF	ON/OFF	ON/OFF	ON/OFF	ON/OFF
Sun	ON/OFF	ON/OFF	ON/OFF	ON/OFF	ON/OFF

(PS: The first working period is factory defaults with start working time 07:00 and stop working time 19:00, Grade 1, the rest are all with 00:00.)

Buttons: SET, ^, v, ENT

(3)

Buttons: SET, ^, v, ENT

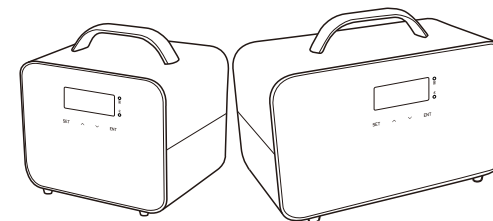
(4)

Buttons: SET, ^, v, ENT

(5)

PRODUCT MANUAL

SCENT MARKETING



CONCENTRATION AND CONSUMPTION

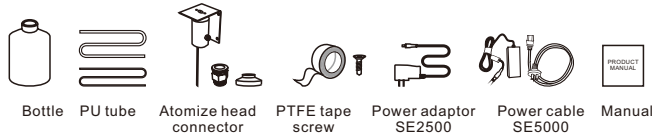
Grade	Consume(ml/h)		Concentration	
	SE2500	SE5000	Working(sec)	Stop(sec)
G1	0.2	0.4	15s	300s
G2	0.4	0.8	15s	150s
G3	0.6	1.2	20s	120s
G4	0.8	1.6	20s	85s
G5	1.0	2.0	25s	80s
G6	1.2	2.4	30s	75s
G7	1.4	2.8	30s	60s
G8	1.6	3.2	30s	50s
G9	1.8	3.6	30s	40s
G10	2.0	4.0	30s	33s
G11	2.2	4.4	33s	30s
G12	2.4	4.8	40s	30s
G13	2.6	5.2	50s	30s
G14	2.8	5.6	60s	30s
G15	3.0	6.0	75s	30s
G16	3.2	6.4	80s	25s
G17	3.4	6.8	85s	20s
G18	3.6	7.2	120s	20s
G19	3.8	7.6	150s	15s
G20	4.0	8.0	300s	15s

Using an UP ▲ and DOWN ▼ allows you to adjust the scent intensity.
 Note: 1. The above data is based on using aroma oil.
 2. Using other type of oil may have an effect on the consumption rate.

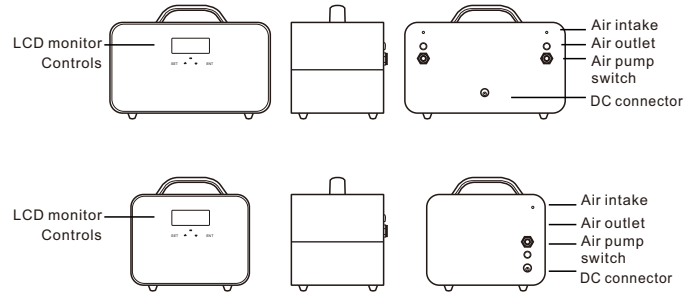
OVERVIEW



[Model]	SE2500B-V2.0 / SE5000B-V2.0
[Dimension]	195*160*148mm / 255*153*157mm
[Machine N.W.]	3.9kg / 4.6kg
[Voltage]	Input:AC100V-240V50/60HZ DC12V 2A Input:AC100V-240V50/60HZ DC12V 5A
[Power]	12W/25W
[Coverage]	2500m³ / 5000m³
[Bottle capacity]	2500ml*1 (SE2500B) 2500ml*2 (SE5000B)

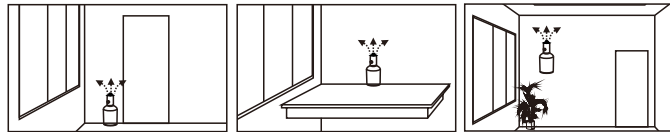


Specification



Application

Application places: Hotel, Meeting Room, Mall, Exhibition Hall, Brand retail store, Bar, SPA, Business Place or anywhere you want to enjoy aroma experience.

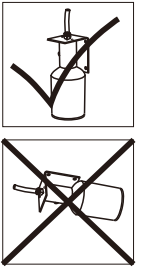


Caution

- Shall not modify, disassemble or repair the machine arbitrarily. Any failure happens, please contact relevant technician in time.
- Shall not damage the power cord, force to bend, yank, heavy load, clip or reprocess.
- Shall not use the AC plug when it is damaged or un-matched with the socket;
--Shall not wet the machine or the AC plug;
--Shall not use overlaid power socket, wire or broken plug.
- Shall not touch the wire or product shell when thundering or/and lightning.
- Shall not disassemble the machine when it is under operating.

Warning

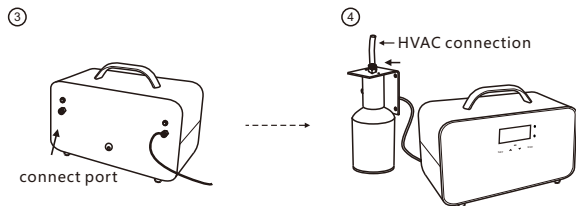
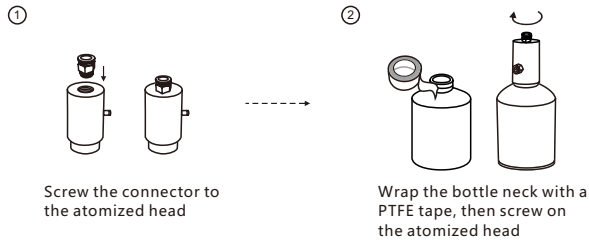
1. After installation, please keep the machine vertical. Tilting or placing it flat may cause an oil overflow and machine damaged.
2. Shall not modify, disassemble or repair the machine arbitrarily. Any failure happens, please contact relevant technician in time.
3. Atomization icon displays on screen but the machine would not diffuser when it stays on pause time.
4. It is invalid to touch/tap button when machine is under lock status.
5. If the screen display messy, programs crash, please rest the machine by touch "ENT" button about 5 seconds till a short "beep" sound comes out.



Installation

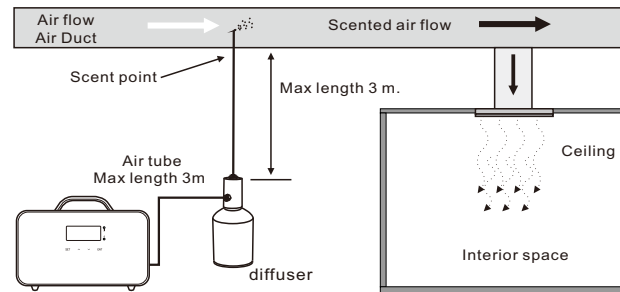
Usage of PTFE tape:

1. Before replacing the atomizing core, wrap the PTFE tape around the thread of the atomizing core, preferably 3-5 turns to prevent air leakage.
2. Before connecting the quick connector, wrap the PTFE tape around the quick connector thread, preferably 3-5 turns to prevent air leakage

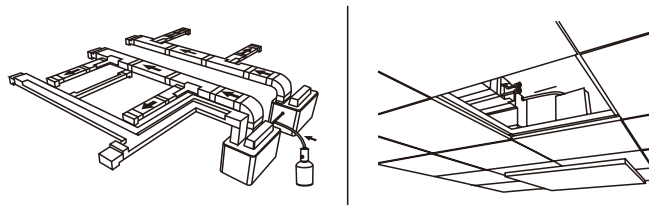


Connect atomized head with the machine by PU tube

Instructions



Installation step:



Troubleshooting

Before asking to have the machine repaired, please try to diagnose the problem first following to bellow instructions.

Breakdown	Solution
Does not diffuse	- Check whether the mode you choose is correct or not. - Check if the machine is during "Non-Working period" - Air pump may be damaged, change a new one. - Check whether the tube is loose or not
Weak diffuse	- The atomizing core is blocked, clean by alcohol or change a new component. - Check whether the gasket is damage/loose or not. - Check whether the tube is loose or not
Oil leaking	- Check whether the bottle is loose or not - The gasket in the atomized head is damaged or loose.
Oil sprinkle	- The atomized head is damaged, change a new one - The machine is tilted or lie down, keep the machine vertical.
Abnormal noise	- The air pump is loose, retighten the pump - The air pump is damaged, change a new one.

EQUIPMENT CLEANING

The machine needs to be cleaned when below situations happen:

1. You're about to change to another kind of essential oil.
2. The atomization volume becomes weak.

Cleaning steps:

1. Pull out the atomized head, loose the bottle.
2. Refill industrial alcohol into bottle about 15%, make it diffuse 5 minutes.
3. Airing the atomized head and the bottle.