

Instructions

Where to get the app:

Please search "Scent Marketing" in Google play or App store for download.



Note:

1. Please make sure that the Bluetooth function is turned on;
2. Please make sure that the location function of the mobile phone is turned on.

Select version: Bluetooth version, WIFI version

Device: + Add device

xxxx, xxxx

LOIRE / AIRSCENT

Password: 8888

Login

Device Setting: Setting, About

LOIRE / AIRSCENT

50% Essential oil: 100ml Remaining: 50ml

Name: Maximum 16 chara... SA100C_RSSI

8150D

Amend device name

Remarks: location

+ Add working period

00:00-23:59 Grade: 09

Mon Tue Wed Thur Fri Sat Sun

23:58-00:01 Grade: 01

Mon Tue Wed Thur Fri Sat Sun

Time switch

Delete working period

Slide left to delete working period for IOS

(PS: There are 5 working periods available to be set.)

After adjusting grade, please save it BEFORE going back to the home page.

Amend password

Device control: Set, About

PCB Version: xxxxx

Equipment version: xxxxx

APP version: xxxxx

Change password, APP Upgrade

Change your password

The new password

Confirm password

Change password

If you forget the password, please press the reset button to restore the factory settings. The factory settings password is 8888.

TIME SETTING

Mon-Sun

MON TUES WED THUR FRI SAT SUN

ON 08:00

OFF 21:00

local time

Atomization icon

Atomization grade

Power on

Connect with power supply, short "beep" –power-on voice comes out, the screen lights on, which shows local time, atomization grade and icon.

Power off

Disconnect power supply, lights off and no display on screen.

Auto-lock

Machine will be locked automatically and no display within 10 seconds if there is no any further manual manipulation.

Unlock

Touch "SET" button (about 5 seconds) with voice "beep" and screen lights on to unlock machine.

Local time setting

Touch button "SET" (about 5 seconds) till comes a short "beep" voice for local time setting; touch ▼ or ▲ button to choose local weekday, touch "ENT" to move to next setting position; go to same steps for hours setting (Figure 1).

MON TUES WED THUR FRI SAT SUN

ON 08:00

OFF 21:00

SET ^ (1) v ENT

Atomization grade indicator

There are totally 20 fragrance concentration grades, touch ▲ / ▼ to up/down grades to adjust fragrance concentration, for example the 20th grade is displaying (figure 2).

Diffusion time setting

There are 5 working periods available to be set for machine (figure 3). Touch "SET" button go to set the first working period, touch ▼ or ▲ to adjust working time (ON 1) and stop working time (OFF 1), touch "ENT" to move to next working periods till ON5 / OFF5 (figure 4). Then touch "ENT" to move to MON~SUN, touch ▲ to turn on or touch ▼ to turn off, please operate same steps to choose working period for each day ON or OFF. For example, for the first working period, touch ▼ or ▲ to work / stop working on Monday (figure 5) By parity of reasoning to the fifth working period and operating situation for each day.

Available working period	00:00-00:00	00:00-00:00	00:00-00:00	00:00-00:00	00:00-00:00
Mon	ON/OFF	ON/OFF	ON/OFF	ON/OFF	ON/OFF
Tues	ON/OFF	ON/OFF	ON/OFF	ON/OFF	ON/OFF
Wed	ON/OFF	ON/OFF	ON/OFF	ON/OFF	ON/OFF
Thur	ON/OFF	ON/OFF	ON/OFF	ON/OFF	ON/OFF
Fri	ON/OFF	ON/OFF	ON/OFF	ON/OFF	ON/OFF
Sat	ON/OFF	ON/OFF	ON/OFF	ON/OFF	ON/OFF
Sun	ON/OFF	ON/OFF	ON/OFF	ON/OFF	ON/OFF

(PS: The first working period is factory defaults with working at 07:00 and stop working at 21:00 for every day, the rest are all with 00:00)

MON TUES WED THUR FRI SAT SUN

ON 08:00

OFF 21:00

SET ^ (2) v ENT

MON TUES WED THUR FRI SAT SUN

ON 08:00

OFF 21:00

SET ^ (3) v ENT

MON TUES WED THUR FRI SAT SUN

ON 08:00

OFF 21:00

SET ^ (4) v ENT

MON TUES WED THUR FRI SAT SUN

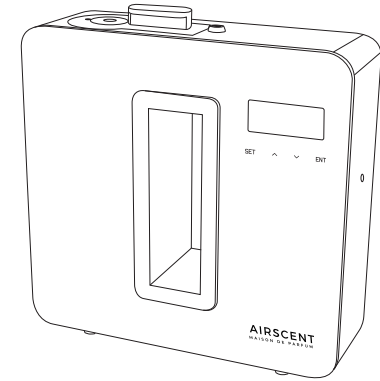
ON 08:00

OFF 21:00

SET ^ (5) v ENT

MANUAL LOIRE

AIRSCENT



DUTCH DESIGN

CONCENTRATION AND CONSUMPTION

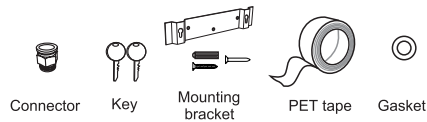
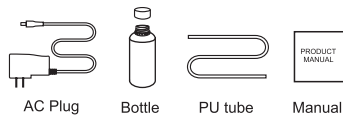
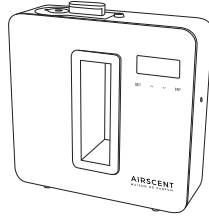
Grade	Consumption (ml/hr)	Working(s)	Stop(s)
G1	0.13	15s	300s
G2	0.25	15s	150s
G3	0.38	20s	120s
G4	0.51	20s	85s
G5	0.64	25s	80s
G6	0.76	30s	75s
G7	0.89	30s	60s
G8	1.02	30s	50s
G9	1.15	30s	40s
G10	1.27	30s	33s
G11	1.40	33s	30s
G12	1.53	40s	30s
G13	1.65	50s	30s
G14	1.78	60s	30s
G15	1.91	75s	30s
G16	2.04	80s	25s
G17	2.16	85s	20s
G18	2.29	120s	20s
G19	2.42	150s	15s
G20	2.54	300s	15s

▲ up grade ▼ down grade

Note: Consumption rate based on factory trials only.

SPECIFICATION

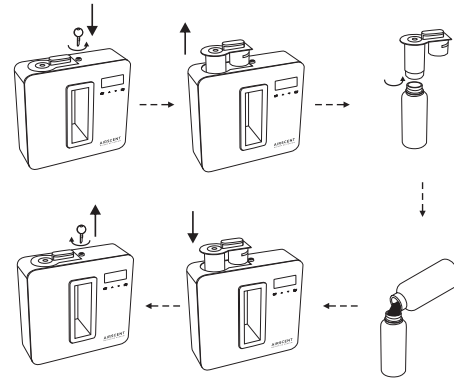
【 Model 】	Seine
【 Dimension 】	252*210*80mm
【 Machine N.W. 】	2.35kg
【 Voltage 】	Input: AC100V~240V 50/60Hz Output: DC12V 1A
【 Power 】	10W
【 Coverage 】	100m ² /300m ² /10600ft ²
【 Bottle capacity】	150ml
【 Material 】	Machine: Iron, Acrylic Bottle: PET Nebulizer: Aluminum



DIRECTION

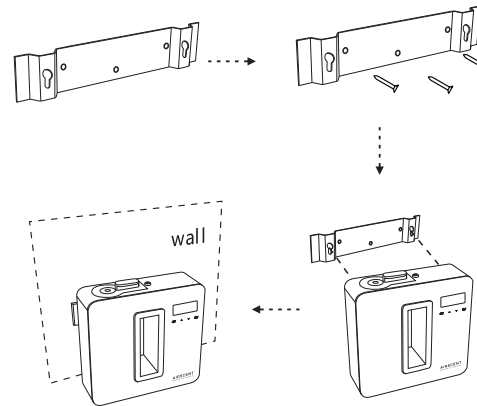
Application places: Hotel, Meeting Room, Mall, Exhibition Hall, Brand retail store, Bar, SPA, Business Places or somewhere you want fragrance experience.

Refill oil steps:



1. Open the cover.
2. Rotate and take off the bottle from the atomizing head.
3. Fill the fragrance in the bottle.
4. Screw on the machine carefully.
5. Close the cover.

Hanging steps:



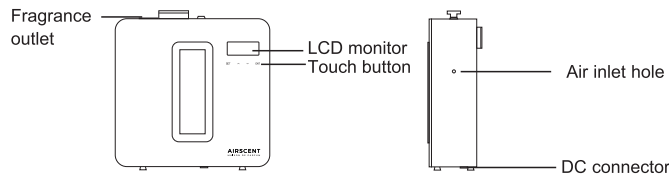
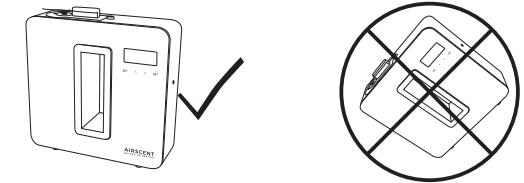
1. Choose a position.
2. Fasten the mounting bracket with nails.
3. Hang the machine.
4. Done.

CAUTION

- Shall not modify, disassemble or repair the machine if you're not a technician. Any failure happens, please contact relevant technician in time.
- Avoiding get fire or electric shock, the power cord shall not be damaged, forced to be bended, yanked or under pressed by heavy objects, clipped or reprocessed.
- Avoiding electric shock/ short out/ get fire any failures:
 - Shall not use the AC plug when it is damaged or un-matched with the socket;
 - Shall not wet the machine or the AC plug;
 - Shall not use overladen power socket, wire or broken plug.
- Avoiding electric shock, shall not touch the wire or product shell when thundering or/and lightning.
- Avoiding any abnormal conditions and damages, shall not disassemble the machine during operating.

Warning:

- Touch/ Tap icons will not operate when Diffuser is in lock status.
- Display screen not functioning normally, displays unclear or program crash. Reset Diffuser; touch "ENT" (5 seconds) until "beep"
- Diffuser must be vertical at all times when fragrance is in bottle. When lying flat, tilted or horizontal the fragrance could overflow. This may effect Diffuser efficiency if circuit board or pump is contaminated.
- After installation, please keep the machine vertical. Tilting or placing it flat may cause an oil overflow. The machine efficiency may be affected if the circuit board is contaminated.



EQUIPMENT CLEANING

Diffuser should be cleaned regularly, timing recommendations below:

1. Refilling / changing fragrance in reservoir.
2. Scenting strength becomes weak.

CLEANING PROCESS

- Turn off Scenting diffuser before cleaning.
- Place clean bottle with small quantity of "Methylated Spirits" / Industrial alcohol.
- Turn on machine and let diffuse for 5 minutes.
- Turn off power for machine and unscrew cleaning fluid bottle.
- Replace with fresh fragrance, machine is now ready for diffusing.

TROUBLESHOOTING

Symptom	Remedy
No diffusion	-Check power: On or Off ; -Check if timer, diffuser stops in «not working period»; -Pump damaged, replacement required.
Low level of Diffusing	-Nebuliser (nozzle) may be blocked, diffuse with Methylated Spirits /Industrial alcohol, as recommended in Cleaning Instructions; -Pump aging, replacement required.
Fragrance Spraying	-Nebuliser (nozzle) is damaged, replacement required; -Diffuser has been laying horizontal, flat, stand vertical.
Oil spillage	-Check bottle correctly screwed. Clean fragrance spillage
Abnormal sound	-Check Pump is loose, tighten fittings if required.
No screen display	-The power is off; -Display screen is damaged, replacement required ;